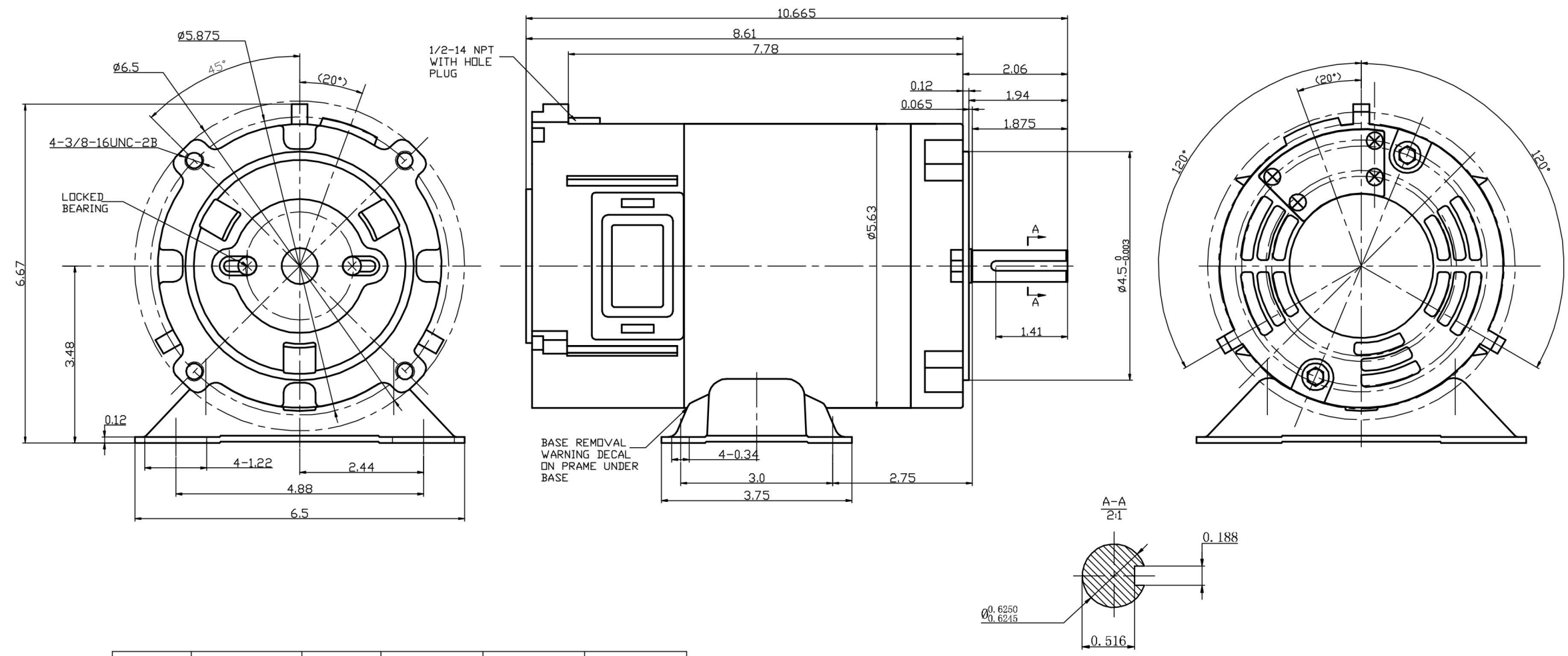

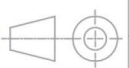


REV	ECO	REV BY	DATE	APPD	DATE

技术要求:
1、电机从出轴端看为顺时针旋转。
Motor from the shaft end is CW.



IND# 型号	额定输出功率 HP	电 压 VDC	电流(不大于) A	额定转速 r/min	转矩 LB-IN
PM050 ZYT48-03	0.33	24	13	1800	11.7

DR BY:		 AG-I MOTORTEC INC. ,
APPD:		
FIRST ANGLE PROJECTION 	EDS DATE VERSION	DESCRIPTION
CONFIDENTIAL: THIS DRAWING AND ITS INFORMATION ARE THE EXCLUSIVE AND CONFIDENTIAL PROPERTY OF GW ELECTRICAL (SHANGHAI) CORPORATION AND ARE NOT TO BE DISCLOSED, DUPLICATED, DISTRIBUTED OR OTHERWISE USED WITHOUT THE WRITTEN CONSENT OF GW ELECTRICAL (SHANGHAI) CORPORATION. -ALL RIGHTS RESERVED.		SIZE A3 DWG NO SCALE SHEET